

Simple processing – Amazing results



sphere easy

NEW

Sphere.easy ...

- one layer solution for all hand lay-up jobs
- time saving, ready to use
- combines core material and reinforcement
- multiple versions possible

Easy advantages:

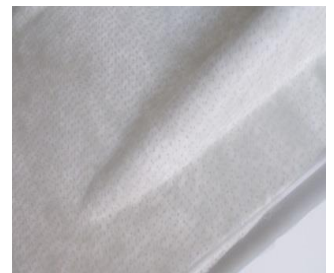
- perfect drapability
- quick processing
- strong, rigid and robust
- laminate density below 1,0 g/cm³

*the new
turnkey
solution*

sphere easy IP

Sphere.easy IP ...

- contains a high performance flow medium
- is suitable for infusion and injection
- ensures fast and steady resin flow
- various possible combinations regarding core, reinforcement and flow media



When you simply need the best

www.spheretex.com